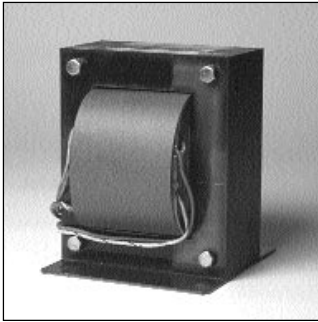


ON SERIES® EXTENDED RUNTIME UPS: For some, conventional UPSs are “good enough”. But many find ordinary protection measures inadequate. Others face performance expectations with no tolerance for downtime. ON Series Power Conditioned UPSs are engineered to satisfy these demanding applications.



ONEAC's low impedance, isolation transformer provides a level of protection superior to surge suppressor and filter based systems — provides greater assurance of system reliability.

Ultimate assurance of system reliability

All UPS makers acknowledge the broad range of power disturbances that compromise system reliability. And all address them to some degree. But here's the difference — ONEAC's proprietary power conditioning technology eliminates power problems entirely. Providing a level of protection that even the highest quality surge suppressor and filter technology cannot match.

Exceptionally dependable battery backup

We start with premium quality batteries. Thermally isolate them for maximum life. And employ unique charging circuitry attuned to the specific battery characteristics of each model to speed recovery and minimize stress on batteries. Automatic monitoring of battery condition ensures readiness, gives plenty of warning when replacement is recommended. And our patented battery pack allows replacement in under a minute without tools or training, without downtime, and without risk.

Proven durability, backed by a 5-year warranty

ONEAC UPS's robust design is impervious to the harshest electrical environments. Designed and manufactured under ISO9001 quality procedures, ON Series UPSs are exceptionally reliable. With an average mean time between failures more than twice as long as leading competitors. No surprise, then, that we back our UPSs with greater confidence — 5 years on all power and control systems, 2 years on the battery sub-system.



- **Extended runtime:** for applications requiring up to 8 hours of battery backup time
- **Full-time, on-line isolating transformer:** eliminates all power contaminants
- **Sinusoidal waveform:** supports even the most sensitive loads
- **ONBoost®:** compensates for momentary voltage drops, conserves batteries
- **Intelligent serial communications:** for advanced diagnostics & remote management
- **On-site, on-line replaceable battery:** minimizes cost and downtime
- **Automatic self test:** ensures battery and system readiness
- **5-year warranty:** the longest in the industry

ON SERIES EXTENDED RUNTIME UPS: Specifications

Power Conditioning

ONEAC's unique power conditioning architecture provides superior protection against the full range of power line disturbances. Components include:

Full output isolation: ONEAC's proprietary transformer design integrates power conditioning magnetics and voltage conversion magnetics in a single compact unit. Provides superior protection against lightning and other high energy surges.

Virtual Kelvin Ground®: Eliminates the full spectrum of conducted power line noise (from 50 kHz to 10 MHz) in all modes, reduces the effect of electrostatic discharge (ESD) and provides an exceptionally clean, signal reference ground for electronic systems.

Communications

Basic Mode provides standard protocols recognized by UPS monitoring software supplied with Windows NT, NetWare and Banyan operating systems.

Advanced Mode uses ONEAC's content-rich ASCII packets to communicate with ONEAC's MopUPS® family of UPS monitoring software for NetWare, Windows NT, a full catalog of UNIX operating systems and SNMP.

Global Approvals

Models for North America are FCC Class A certified and listed under UL 1778 and CSA22.2 safety standards. Models for Europe carry the GS and CE marks and are tested under the following standards: EN50091, EN60950, EN50081-1, EN55022 (CISPR 22), EN50082-1, IEC801-2, IEC801-3 and IEC801-4.

Performance Characteristics

Surge voltage withstand capability: ANSI/IEEE C62.41 Category A&B, 6 kV/200 & 500 Amp, 100 kHz Ringwave

Surge voltage let-through (max): less than 10 V Normal mode (L-N), less than 0.5 V Common mode (N-G) when subjected to 6 kV ANSI/IEEE C62.41 Cat. A

Normal & common mode clamping response time: instantaneous

Transfer time (typical/max): < 3.0 / 3.5 milliseconds

On-battery output voltage: sine wave

ONBoost: boosts output voltage 11% above input voltage if between -21% & -15% of nominal

Load power factor range (crest factor): UPS .65 to 1.0 (3) — will support loads rated 0.5 to 1.0 (<5)

Batteries: sealed, maintenance-free lead acid with a 3-6 year typical lifetime

Recharge time to 60% available capacity: 4 hours per battery cabinet

All units have temperature sensitive chargers and provide thermal isolation for battery pack.

ONEAC, ONBoost, ON Series, MopUPS and Virtual Kelvin Ground are registered trademarks of ONEAC Corporation. All other trademarks are the property of their respective companies.



All ONEAC-manufactured products are Y2K compliant.

ONEAC is a UL/BSI registered corporation — Certification No. A2900



SERIES	ON600	ON900	ON2000	ON2200	Battery Cabinet
Maximum capacity (volt-amps/watts)	600/400	900/600	60 Hz: 1850/1300, 50/60 Hz: 2000/1400	2200/1500	n/a
Batteries	n/a	n/a	n/a	n/a	four 12V, 17AH
Input and output voltage on line	60 Hz: 120 and 120 VAC 50/60 Hz: 230 and 230 VAC			60 Hz: 208 and 230/115 VAC 60 Hz: 220 and 220/110 VAC 60 Hz: 240 and 240/120 VAC	
Output voltage on battery	60 Hz: 120 VAC or 50/60 Hz: 230 VAC			60 Hz: 230/115 VAC	n/a
Maximum dimensions (H) - in. (cm)	7.5" (19)	12" (30)	12" (30)	12" (30)	7.5" (19)
Maximum dimensions (W) - in. (cm)	8.5" (22)	8.5" (22)	8.5" (22)	8.5" (22)	8.5" (22)
Maximum dimensions (D) - in. (cm)	18.5" (47)	18.5" (47)	18.5" (47)	21" (53)	18.5" (47)
Net weight— lbs. (50 Hz in kg)	30 (14)	45 (20)	58 (26)	77 (35)	70 (32)
Shipping weight— lbs. (50 Hz in kg)	35 (16)	50 (23)	63 (28)	82 (37)	74 (34)
Input connector	5-15P	5-15P	5-20P	L6-30P	n/a
<i>Other plugs and sockets available upon request.</i>					
Output sockets:				(2) L6-30R	
NEMA 5-15R for 120 V (IEC 320 female for 50 Hz)	4 (4)	6 (8)	8 (8)	(4) 5-20R	n/a

POWER HEAD REQUIRED	VA LOAD	NUMBER OF BATTERY CABINETS				
		1	2	4	6	8
RUNTIME (HOURS:MINUTES)						
ON600	100	5:54	11:12			
ON600	200	3:29	7:02	15:32		
ON900 ON600	400	1:40	3:43	8:14		
ON2000 ON900 ON600	600	1:04	2:34	5:36	8:28	
ON2000 ON900	800	0:48	2:02	4:23	6:25	9:13
ON2000	1000	0:38	1:42	3:38	5:07	7:28
ON2000	1500	0:22	1:00	2:16	2:56	4:48
ON2000	1850	0:16	0:41	1:39	2:09	3:20
ON2200	2200	0:13	0:28	1:16	1:41	2:40

A CHLORIDE POWER PROTECTION COMPANY

(800) 327 8801 EXT. 5 in USA AND CANADA

+44 0 1235 534721 in UK AND EUROPE

27944 N. Bradley Road, Libertyville, IL 60048 Phone 847 816-6000 FAX 847 680-5124

18 & 20 Blacklands Way, Abingdon Business Park, Abingdon, Oxfordshire OX14 1DY, UK FAX +44 0 1235 534197